



## TECHNICAL RIDER *Danielle*

**PLEASE CONTACT US IF THE VENUE IS NOT EQUIPPED**

### **Necessary stage space :**

Width ideally : 8m.

Depth ideally: 8m.

Height ideally : 5m.

***Please inform us in case of inferior dimensions***

### **Scenography :**

Total black out

Black dance floor.

Fly-curtain black-box (allemande or italienne) according to your set  
(please consult with our producer).

### **Lights :**

Console from the compagnie (DMX inlet in the lighting desk).

### **Spotlights :**

18 PC 1KW

4 PC 650W

2 PAR 64 (CP62)

2 PAR 64 (CP61)

2 light stands (head height)

### **Lee :**

PC: 200 X 4

PAR: 119 X 2

238 X 1

### **Sound:**

Console (4 IN / 4 OUT)

FOH stro of good quality

2 loudspeakers on stands - left and right (2 separate circuits)

1 HF (provided by the compagnie)

Compagnie de la Casquette asbl

58 rue des Coteaux B-1030 Bruxelles Belgique –Tel &Fax : +32 (0)2 242 84 41

Contact admin +32 (0) 484 49 76 08 [compagnie@casquette.be](mailto:compagnie@casquette.be) [www.casquette.be](http://www.casquette.be)



**Miscellaneous:**

Sound and light are commanded by the same person. Need of one table in the audience (rear) or the consoles, DMX and multi son.

**Gauge :**

200 people. Please contact us if more.

**On the spot :**

Easy access to the parking lot for the van. And in the very vicinity of the venue

Set-up : from 4 to 6h with two qualified technicians.  
Pre-installation of lights highly recommended .

Actors needs at least 1h before the performance to warm up

Bring-down : 1h30 avec deux personnes du lieu

Minimum two heated dressing rooms with showers and towels.  
Fruits, dried fruits, juices, water, beer.....  
Meals for 4  
When accomodated : 2-stars hotel minimum + 4 singles

**Contact :**

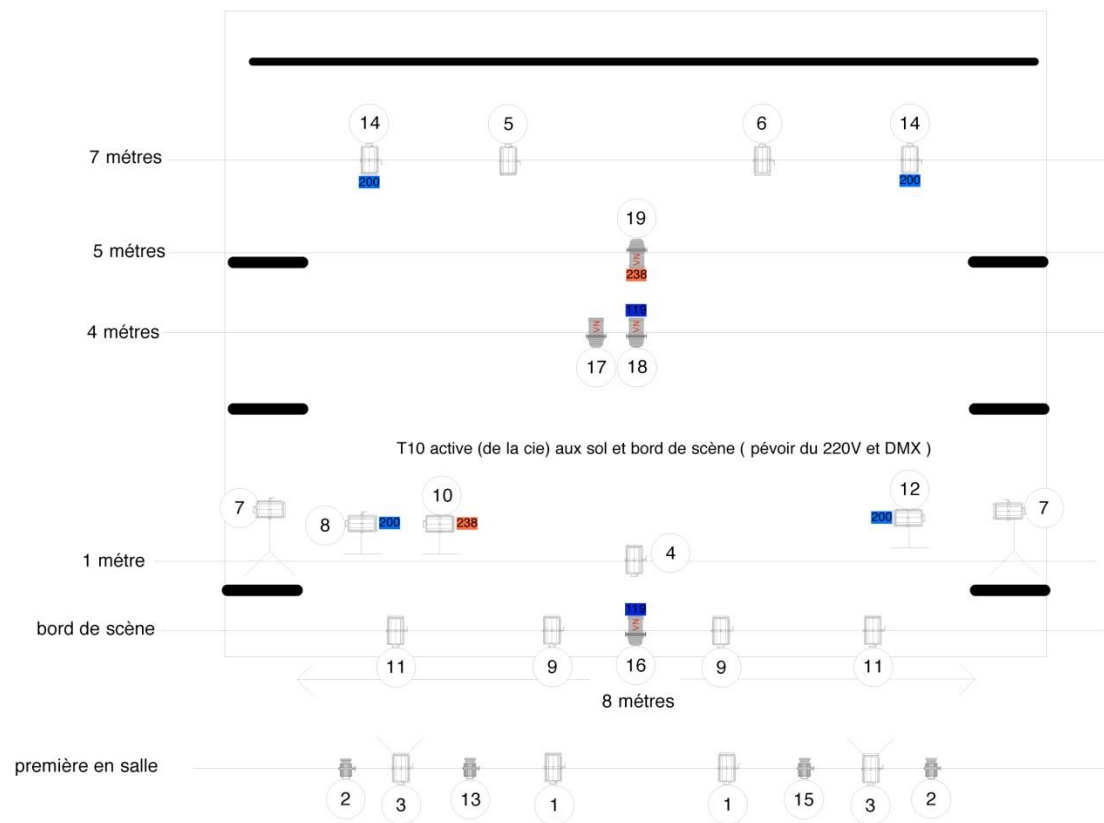
Distribution  
Yannick BOUDEAU  
Tel : +32 (0)2 242 84 41 Mob : +32 (0)484 49 76 08 email : [yannick@casquette.be](mailto:yannick@casquette.be)

Technic  
Martin DELVAL  
Tel : +32 (0)485 40 20 28 Email: [martin.delval@yahoo.fr](mailto:martin.delval@yahoo.fr)


In case of non-compliance with the above, the agreement can be cancelled




# Danielle



 pendrillon ( 1m 50 de long )

 pied de projecteur ( hauteur de tete )

 PAR 64 ( CP62 ) et ( CP61 pour les circuits 18 et 19 )

 PC 1000W avec volets

 PC 650W

Delval Martin: +32/485 40 20 28  
martin.delval@yahoo.fr